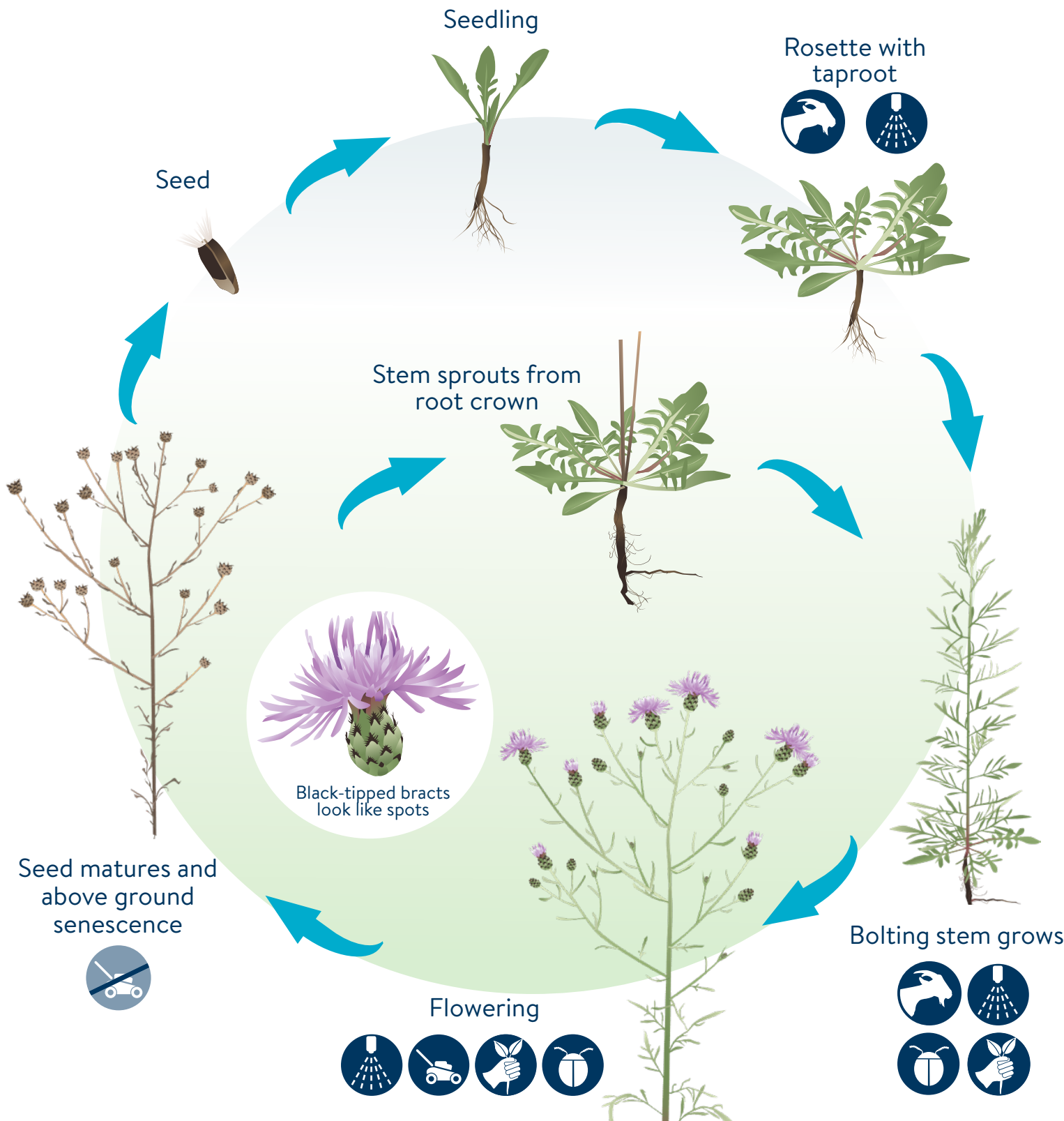


SPOTTED KNAPWEED

Centaurea stoebe ssp. micranthos


PERENNIAL LIFECYCLE & TREATMENT TIMING

mda.state.mn.us/weedcontrol




 **HAND PULL**
Remove roots of small infestations.


 **DIG ROOT**
Dig out roots of small infestations.

 **MOW**
Mow at least once per year during flowering stage.

 **FOLIAR SPRAY**
Spray rosettes or bolting plants.

 **BIOCONTROL**
Release designated biocontrol agents on large populations.

 **GRAZING**
Goats or sheep eat at rosette stage and bolting stage.

 **Monitoring and repeated management is necessary for long term control of established infestations.**

